

POULTRY PROCESSING

Food Safety Program (Level 3)

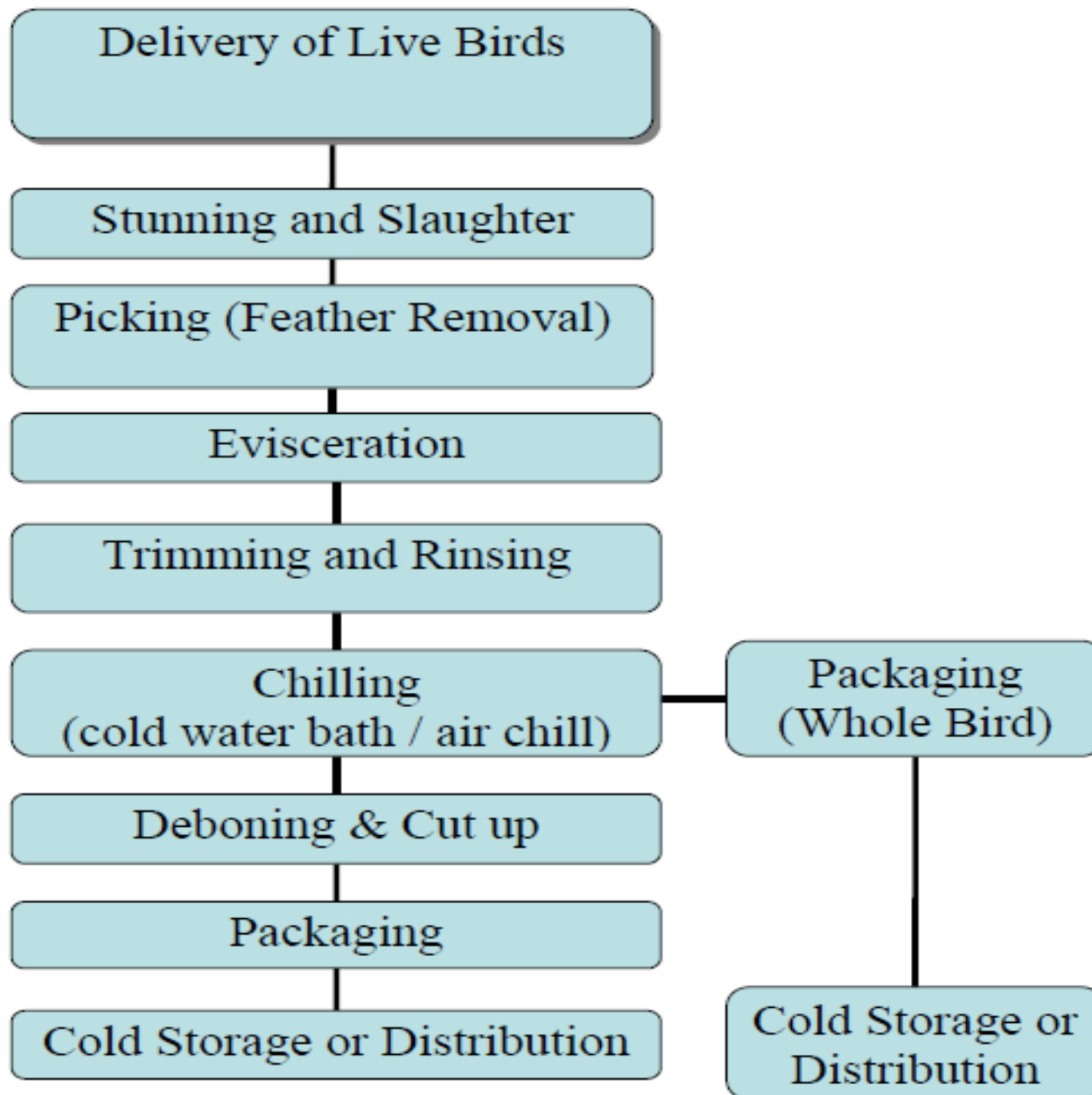
Food Technology 2

(Meat, poultry and Fish Technology) FS0708

Prepared by

Dr. Mahmoud Haassan Mohamed

Professor of Food Technology



Delivery of ling birds



Shackling and Stunning





Processing Steps

Shackling التعليق

- ⦿ Poultry meat processing is initiated by **hanging**, or **shackling**, the birds to a processing line.
- ⦿ Birds are transferred from coops or transport cages to a dark room where they are hung upside down from shackles attached to an automated line.

Stunning التدويخ

- ⦿ **Electrical stunning** -- delivers a current through a water bath to deem the bird unconscious.
 - An effective stun will cause the bird to arch the neck, hold the wings tightly to the body, and sometimes have body tremors.
 - The current should be compliant with minimum recommended current / bird.
- ⦿ **Controlled Atmosphere Stunning** -- Gas stunning is another form of stunning. Birds are immersed in an approved gas or mixture of gases (i.e., CO₂) in order to displace Oxygen and render the bird unconscious.

Processing Steps (continued)

Bleeding الأدماء

- ⦿ After stunning, the birds are passed through an automated knife that makes an incision on the neck to cut the jugular vein.
- ⦿ With the carcass hanging upside down and the jugular vein cut, the majority of the blood is drained from the carcass.

Scalding السط

- ⦿ Scalding loosens the feathers to facilitate their removal.
- ⦿ Carcasses are submerged into the scalding tank that contains water heated to 150 °F.
- ⦿ This high water temperature serves to loosen the connection of feathers to the skin.





Processing Steps (continued)

Picking الترييش

- ⦿ Picking is a term that refers to feather removal.
- ⦿ The picker removes the feathers on the carcass.
- ⦿ The picker is an automated machine that contains rubber finger-like projections that rotate in a circular motion to remove feathers without damaging the carcass.

Removal of feet, head, neck and oil glands

- ⦿ Feet are removed at the knee joints.
- ⦿ The head is cut and removed.
- ⦿ The neck is cut by machine and esophagus is exposed.









Processing Steps (continued)

Evisceration نزع الاحشاء

- ⦿ Evisceration refers to the removal of internal organs.
- ⦿ The inedible viscera consists of the spleen, esophagus, lungs, intestines and reproductive organs.
- ⦿ The intestines (viscera) are federally inspected for signs of disease or other problems.
- ⦿ Identified disease or other problems results in the removal, or condemnation, of the carcass from the processing line.
- ⦿ The edible viscera, or giblets, consists of the heart, liver, and gizzard.
- ⦿ The giblets are packaged in the carcass or sold separately.

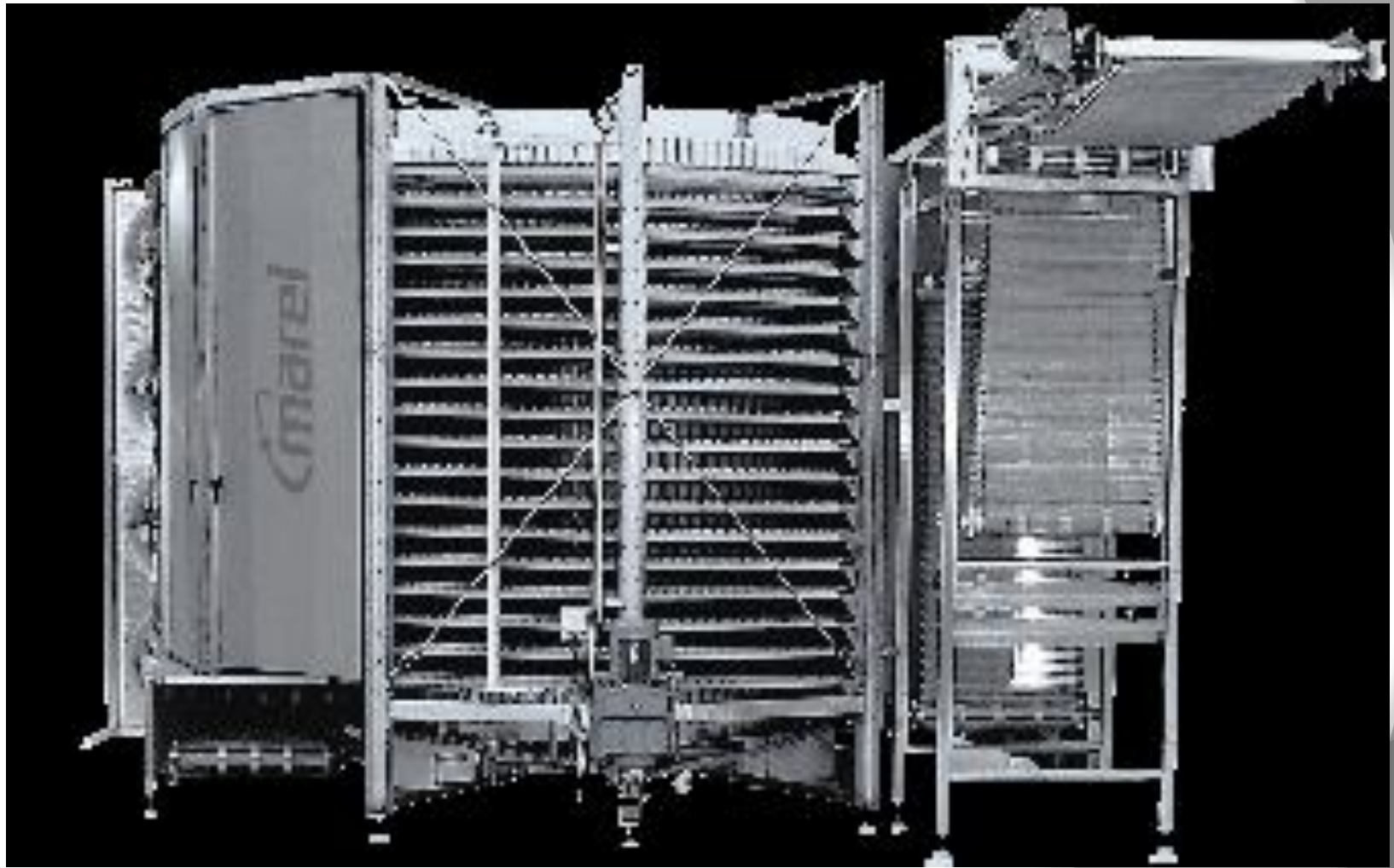
Processing Steps (continued)

Washing the carcass

- ⦿ The carcasses are cleaned for microbial and visible concerns.
- ⦿ When processing chicken, microbial bacteria such as E. Coli and Salmonella are analyzed.

Chilling

- ⦿ The carcass temperature must be reduced to prevent microbial growth.
- ⦿ The USDA specifies the amount of chilling for specific bird sizes.
- ⦿ 4 lb broiler: 40 °F within 4 hours
- ⦿ 4-8 lb broiler: 40 °F within 6 hours
- ⦿ >8 lb broiler: 40 °F within 8 hours
- ⦿ Submerging the carcass in an ice (chilled water) bath is the most common method of carcass chilling.
- ⦿ Carcass can also be chilled by air chilling.
- ⦿ Air chilling occurs by passing cold air over the carcass. This is a more expensive process but some consumers are willing to pay more for air chilling.





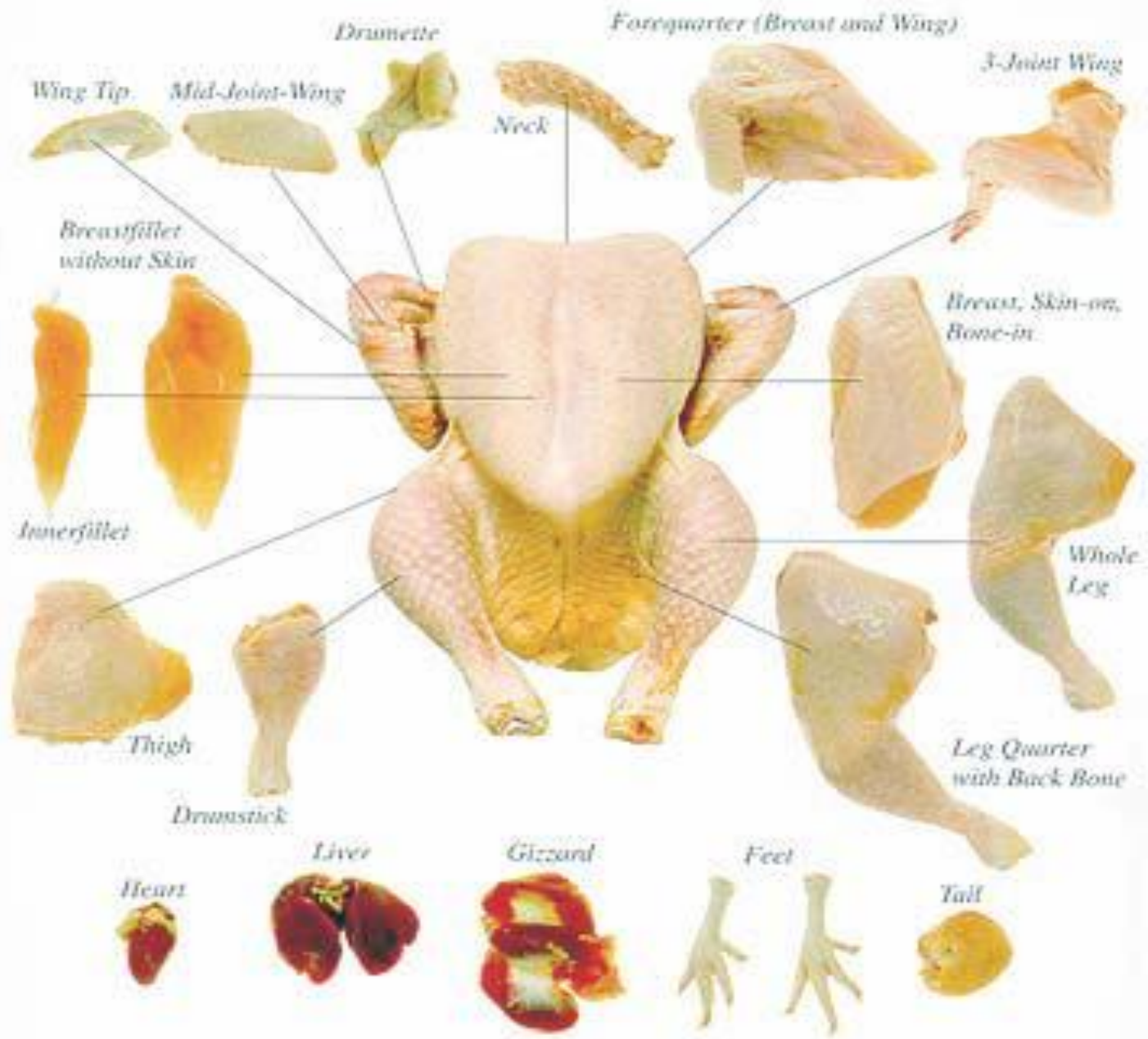


Processing Steps (continued)

Cut-up and deboning

- ⦿ On average, 75-80% of the live animal weight is retained in the carcass.
- ⦿ This amount of live weight retained in the carcass is known as the dressing percentage or yield.
- ⦿ The carcass can be sold whole, or individual components of carcass can be cut-up for individual sale.
- ⦿ Cut-up often times includes removal of the breast, thigh, drumsticks, and wings.
- ⦿ Deboning refers to the removal of bone from the cut-up meat.
- ⦿ Breasts and thighs are commonly deboned.







Boneless Thigh Meat

Boneless Leg Meat

*Boneless
Skinless Trimmed
Breast*

Boneless Tenders

Split Wings

Whole Wings

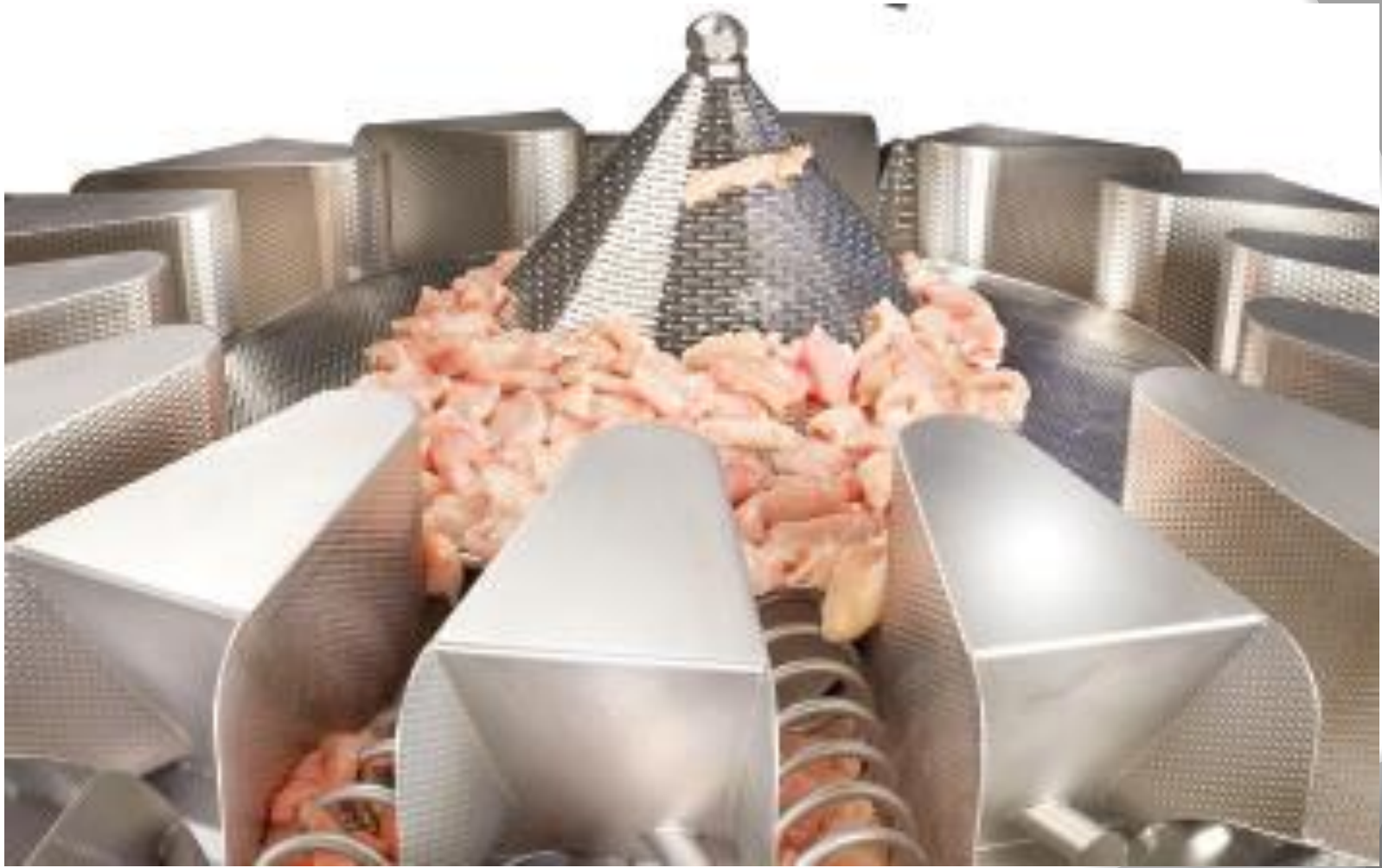
Processing Steps (continued)

Further processing

- ⦿ The whole carcass or cut-up and deboned pieces may be further processed for added value.
- ⦿ Further processing may include forming, curing, smoking, and cooking of products.
- ⦿ Forming product requires a change in particle size and often includes the addition of nutrients to add flavor.
- ⦿ Forming product also requires the use of a mold to obtain desired shape.
- ⦿ Formed products include hot dogs, chicken nuggets, or sausage.
- ⦿ Curing involves the addition of preservatives, often nitrates, to the meat to improve flavor and product shelf-life.
- ⦿ Smoking also acts as a preservative while providing additional flavor to the product.
- ⦿ Some product may prepared in a form that is edible without additional preparation and is known as “ready-to-eat”.





















Processing Steps (continued)

Storage

- ⦿ Poultry meat should be refrigerated around 30 °F. Keeping the poultry below 40 °F reduces the risk of microbial growth.
- ⦿ Refrigeration and freezing does not kill all microbes.



Equipment Used in Plant

Stunning cabinet

- Electrical circuit passes through the whole body and usually delivers about 200mA, depending on the setting.

Automated knife blade

- Cuts the throat and jugular vein allowing the blood to flow out of the bird. All birds are stunned and insensible to pain prior to entering the automated knife machine.

Scalding tank

- The purpose is to loosen the feather follicles of the bird so that the picker can remove the feathers.

Picker

- Soft, rubber projections are installed throughout the inside and the purpose is to remove all of the feathers so the bird is ready for processing.

Pneumatic shears

- An air powered device to remove the neck and head.

Layout of Plant

Flow of operations

- ⦿ Poultry processing plants are highly organized and mechanized facilities that contain state-of-the-art technology to ensure the safe preparation of poultry meat products.
- ⦿ Processed product should travel from the area of highest potential contamination to the lowest potential contamination.

Personnel traffic flow

- ⦿ Personnel traffic flow should be restricted to prevent potential contamination of product.
- ⦿ Personnel should be restricted to their routine work area.

Separation of raw and ready-to-eat product

- ⦿ Ready-to-eat products must be located in a separate facility from raw product in order to prevent potential contamination.
- ⦿ Ventilation systems should direct airflow away from cooked products.

Requirements of a Packaging Label

- 1. Sell-by date
 - Preferred by stores
 - Date used for quality assurance.
 - Food can still be consumed if meat is frozen and the sell-by date is expired.

Barcode: 206018 036671

Sunshine Foods
Fort Smith, AR 72906

FRESH ROASTING CHICKEN WHOLE

SELL BY DATE: MAY 9

NET WT 6.88 lb | PRICE PER LB \$1.63 | TOTAL PRICE \$11.21

Cooking Instructions
Note: Thaw before cooking. Thaw in refrigerator for 5 hours per pound or thaw in cold water, changing water every 30 minutes for 1 hour per pound.
After thawing follow the instructions below:
1. Preheat oven to 375°.
2. Place on rack in shallow roasting pan with breast side up.
3. Place in preheated oven and roast for approximately 20 minutes per pound.
4. Roast until it has reached an internal temperature of 175° or so that when the thickest part of the chicken is probed the juices run clear.
5. Let stand for 10-15 minutes before carving.

Nutrition Facts
Serving Size 3 oz. (84 g)
Servings Per Container Varied

Amount per Serving	
Calories 185	Calories from Fat 105
% Daily Value*	
Total Fat 11g	17%
Saturated Fat 3g	15%
Cholesterol 56mg	19%
Sodium 375mg	16%
Total Carbohydrate 0g	0%
Protein 14g	
Vitamin A 1.5%	Iron 4.5%

Not a significant source of dietary fiber, sugars, vitamin C, and calcium.
*Daily value percentages are based on a 2000 calorie diet.

Safe Handling Instructions
This product was prepared from inspected and passed meat and/or poultry. Some food products may contain bacteria that could cause illness if the product is mishandled or cooked improperly. For your protection, follow these safe handling instructions.

- Keep refrigerated or frozen. Thaw in refrigerator or microwave.
- Cook thoroughly.
- Keep raw meat and poultry separate from other foods. Wash working surfaces (including cutting boards), utensils, and hands after touching raw meat or poultry.
- Keep hot foods hot. Refrigerate leftovers immediately or discard.

Requirements of a Packaging Label

2. Plant Code

- All product inspected at retail stores.
- Used for bacteria outbreak and recalls.

206018 036671

Sunshine Foods
Fort Smith, AR 72906

FRESH ROASTING CHICKEN WHOLE
Prepared Fresh

SELL BY DATE: MAY 9

NET WT/CT	PRICE/LB	TOTAL PRICE
6.88 lb	\$1.63	\$11.21

Cooking Instructions
Note: Thaw before cooking. Thaw in refrigerator for 5 hours per pound or thaw in cold water, changing water every 30 minutes for 1 hour per pound.
After thawing follow the instructions below:
1. Preheat oven to 375°.
2. Place on rack in shallow roasting pan with breast side up.
3. Place in preheated oven and roast for approximately 20 minutes per pound.
4. Roast until it has reached an internal temperature of 175 or so that when the thickest part of the chicken is probed the juices run clear.
5. Let stand for 10-15 minutes before carving.

Nutrition Facts
Serving Size 3 oz. (84 g)
Servings Per Container Varied

Amount per Serving	
Calories 185	Calories from Fat 105
% Daily Value*	
Total Fat 11g	17%
Saturated Fat 3g	15%
Cholesterol 56mg	19%
Sodium 375mg	16%
Total Carbohydrate 0g	0%
Protein 14g	
Vitamin A 1.5%	Iron 4.5%

Not a significant source of dietary fiber, sugars, vitamin C, and calcium.
*Daily value percentages are based on a 2000 calorie diet.

Safe Handling Instructions
This product was prepared from inspected and passed meat and/or poultry. Some food products may contain bacteria that could cause illness if the product is mishandled or cooked improperly. For your protection, follow these safe handling instructions.

- Keep refrigerated or frozen. Thaw in refrigerator or microwave.
- Cook thoroughly.
- Keep raw meat and poultry separate from other foods. Wash working surfaces (including cutting boards), utensils, and hands after touching raw meat or poultry.
- Keep hot foods hot. Refrigerate leftovers immediately or discard.

Requirements of a Packaging Label

- 3. Grade of Chicken
 - Grade A is the best quality.
 - Includes plump, bruise free, and no broken bones.

Sunshine Foods
Farm Fresh, AR 72004

FRESH ROASTING CHICKEN WHOLE
Prepared Fresh

SELL BY DATE: 11/11/19

NET WT/CT	PRICE/LB	TOTAL PRICE
6.88 lb	\$1.63	\$11.21

Cooking Instructions
Note: Thaw before cooking. Thaw in refrigerator for 5 hours per pound or thaw in cold water, changing water every 30 minutes for 1 hour per pound.
After thawing follow the instructions below:
1. Preheat oven to 375°.
2. Place on rack in shallow roasting pan with breast side up.
3. Place in preheated oven and roast for approximately 20 minutes per pound.
4. Roast until it has reached an internal temperature of 175 or so that when the thickest part of the chicken is probed the juices run clear.
5. Let stand for 10-15 minutes before carving.

Nutrition Facts
Serving Size 3 oz. (84 g)
Servings Per Container Varied

Amount per Serving	
Calories 185	Calories from Fat 105
% Daily Value*	
Total Fat 11g	17%
Saturated Fat 3g	15%
Cholesterol 56mg	19%
Sodium 375mg	16%
Total Carbohydrate 0g	0%
Protein 14g	
Vitamin A 1.5%	Iron 4.5%

Not a significant source of dietary fiber, sugars, vitamin C, and calcium.
*Daily value percentages are based on a 2000 calorie diet.

Safe Handling Instructions
This product was prepared from inspected and passed meat and/or poultry. Some food products may contain bacteria that could cause illness if the product is mishandled or cooked improperly. For your protection, follow these safe handling instructions.

- Keep refrigerated or frozen. Thaw in refrigerator or microwave.
- Cook thoroughly.
- Keep raw meat and poultry separate from other foods. Wash working surfaces (including cutting boards), utensils, and hands after touching raw meat or poultry.
- Keep hot foods hot. Refrigerate leftovers immediately or discard.

Requirements of a Packaging Label

- 4. Keep refrigerated.
- 5. Follow label instructions.
- 6. Nutrition Facts
 - Serving sizes
 - Fat, sugar, sodium, and carbohydrate inclusion.

Barcode: 206018 036671

Sunshine Foods
Fort Smith, AR 72906

FRESH ROASTING CHICKEN WHOLE
Prepared Fresh

SELL BY DATE: MAY 9

NET WT/CT	PRICE/LB	TOTAL PRICE
6.88 lb	\$1.63	\$11.21

Cooking Instructions
Note: Thaw before cooking. Thaw in refrigerator for 5 hours per pound or thaw in cold water, changing water every 20 minutes for 1 hour per pound.

After thawing follow the instructions below:

1. Preheat oven to 375°.
2. Place on rack in shallow roasting pan with breast side up.
3. Place in preheated oven and roast for approximately 20 minutes per pound.
4. Roast until it has reached an internal temperature of 175 or so that when the thickest part of the chicken is probed the juices run clear.
5. Let stand for 10-15 minutes before carving.

Nutrition Facts
Serving Size 3 oz. (84 g)
Servings Per Container Varied

Amount per Serving	
Calories 185	Calories from Fat 105
% Daily Value*	
Total Fat 11g	17%
Saturated Fat 3g	15%
Cholesterol 56mg	19%
Sodium 375mg	16%
Total Carbohydrate 0g	0%
Protein 14g	
Vitamin A 1.5%	Iron 4.5%

*Percent Daily Values are based on a diet of other people's misdeeds.

Safe Handling Instructions
This product was prepared from inspected and passed meat and/or poultry. Some food products may contain bacteria that could cause illness if the product is mishandled or cooked improperly. For your protection, follow these safe handling instructions.

- Keep refrigerated or frozen. Thaw in refrigerator or microwave.
- Cook thoroughly.
- Keep raw meat and poultry separate from other foods. Wash working surfaces (including cutting boards), utensils, and hands after touching raw meat or poultry.
- Keep hot foods hot. Refrigerate leftovers immediately or discard.



